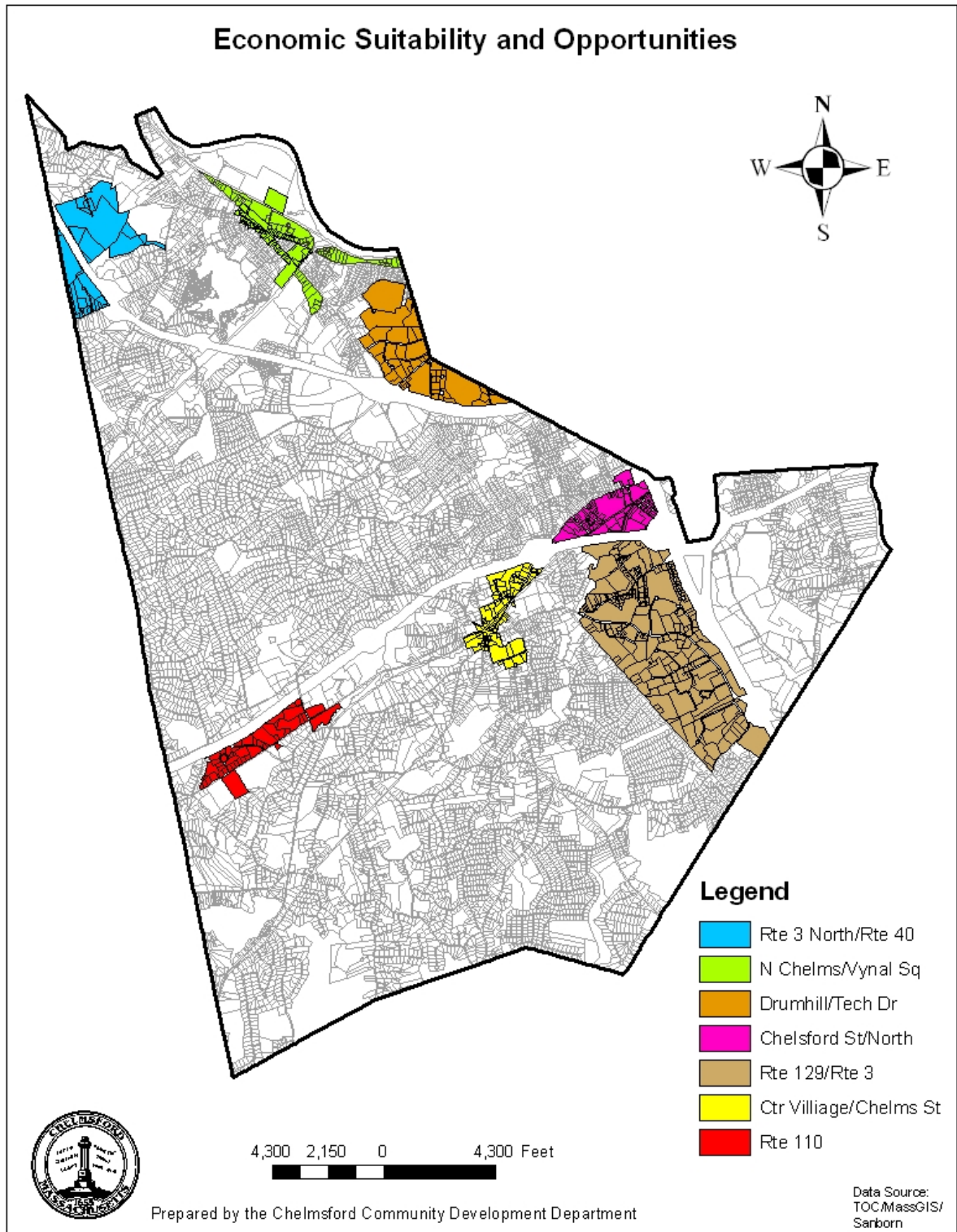


Vinal Square / North Chelmsford Mill District



Vinal Square / North Chelmsford Mill District

This mixed use area is located in the heart of North Chelmsford at the intersection of Route 3A (Princeton Street), Groton Road (Route 40) and Middlesex Street. This pedestrian friendly area is home to many small locally owned businesses, including a hardware store, convenience store, hair salons, restaurants, a bank and a bowling alley.

Within walking distance of the Square are two historic mill buildings that have been successfully adapted for modern use. These mills contain a variety of uses, including residential lofts, retail, office, personal services, light industrial and storage space.

Leaving the Square, heading both north on Tyngsboro Road and south on Princeton Street (Route 3A), additional commercial and retail businesses can be found.

In addition to the Square and historic mills, Mahoney's Garden Center, New England's Largest Family of full service Garden Centers and Princeton Station, a restaurant, lounge, entertainment and banquet / function facility also anchor this area.

Vinal Square and surrounding areas have good access to the highway system, have an abundance of public and private parking and have excellent visibility and traffic counts on the local roadways.