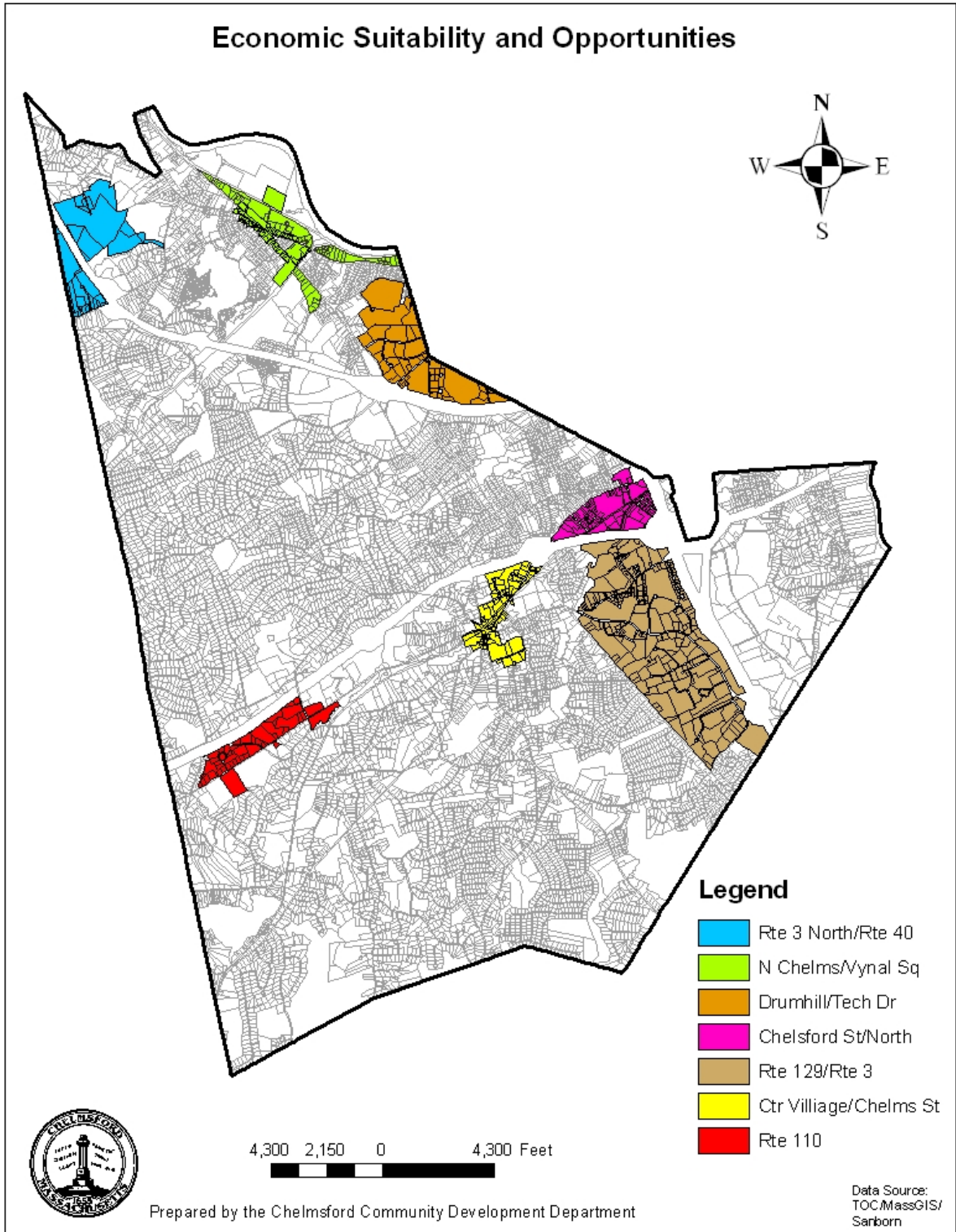


Center Village / Chelmsford Street



Center Village / Chelmsford Street

Existing Conditions

The Center Village is the community's commercial and civic center. It is located at the intersection of Route 110, Route 129 (Billerica Street), Route 27 (Acton Road) and Route 4 (North Street). The Center Village is a designated historic district and exemplifies a classic New England village characterized by a common green, churches and a dense collection of historic structures.

This pedestrian friendly Village consists of many small locally owned and operated businesses such as restaurants, specialty retail, personal service establishments, banks, and numerous professional offices.

Within walking distance to the Village is newer development consisting of a Stop and Shop Supermarket and Marshall's and a shopping plaza hosting a variety of local businesses.

Also within walking distance to the Village are two large employment centers; the Village Square and the Parlee Office Park at Meeting House Road, primarily consisting of specialty doctor offices.

Leaving the Village, heading west on Chelmsford Street (Route 110) towards the in junction with I-495, additional commercial and retail establishments can be found. This corridor continues to experience redevelopment of older properties resulting in a number of national chains choosing to locate here. This commercial corridor is anchored by The Radisson Hotel and Suites, located at 10 Independence Drive offers 214 hotel rooms, including 81 suites corporate suites and 20,000 square feet of meeting space accommodating up to 350 people. Hotel amenities include a 24-hour Business Center and Fitness Center, a heated indoor pool.

The Village Center and surrounding commercial and office areas have excellent access to the highway system, have access to an abundance of public and private parking and have excellent visibility and traffic counts on the local roadways.

The Bruce Freeman Trail, running parallel to Chelmsford Street and directly through Center Village and planned to continue an additional 25-miles south, has provided a positive opportunity for residents and employees to easily access this area.